

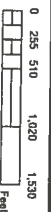
ORIGINAL MAPS PREPARED BY PHOTOGRAMMETRIC METHODS BY
 JOHN E. DOONHILL & ASSOCIATES, AUBURN, MAINE 1877
 DIGITAL MAPS AND GIS DATA PREPARED BY
 SEADCO TECHNIQUES, INC. SOUTH PORTLAND/LEWISTON MAINE 2014



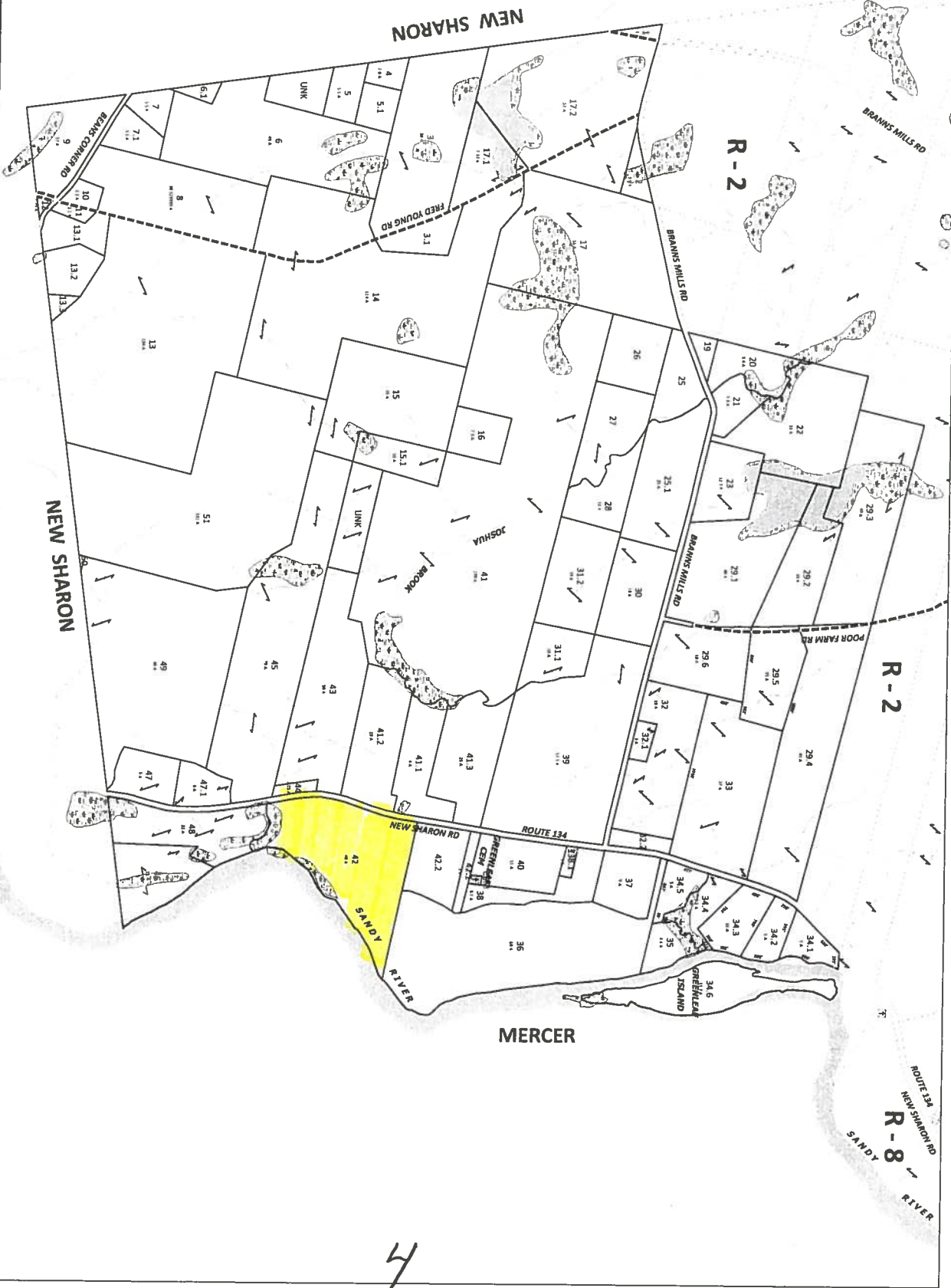
TOWN OF STARKS, MAINE

PROPERTY MAP
 APRIL 1, 2012

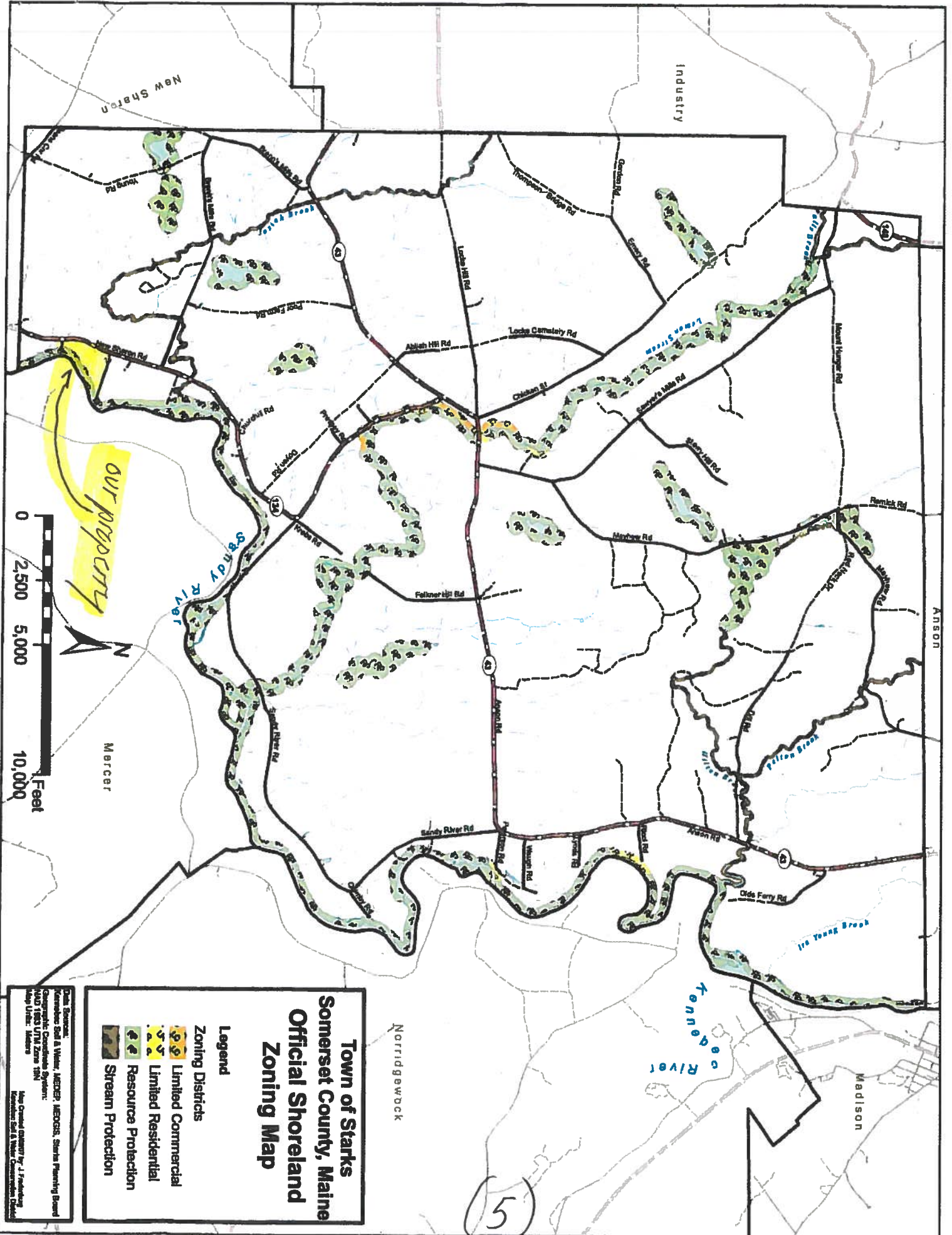
UPDATED
 7:44 AM GDTM
 SEADCO TECHNIQUES 3010 BROOKLINE AND CONVENT ROAD



R-1



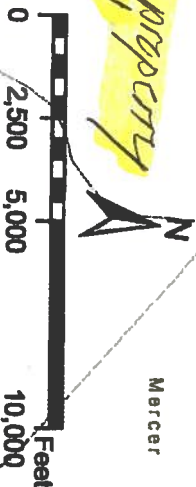
4



**Town of Starks
Somers County, Maine
Official Shoreland
Zoning Map**

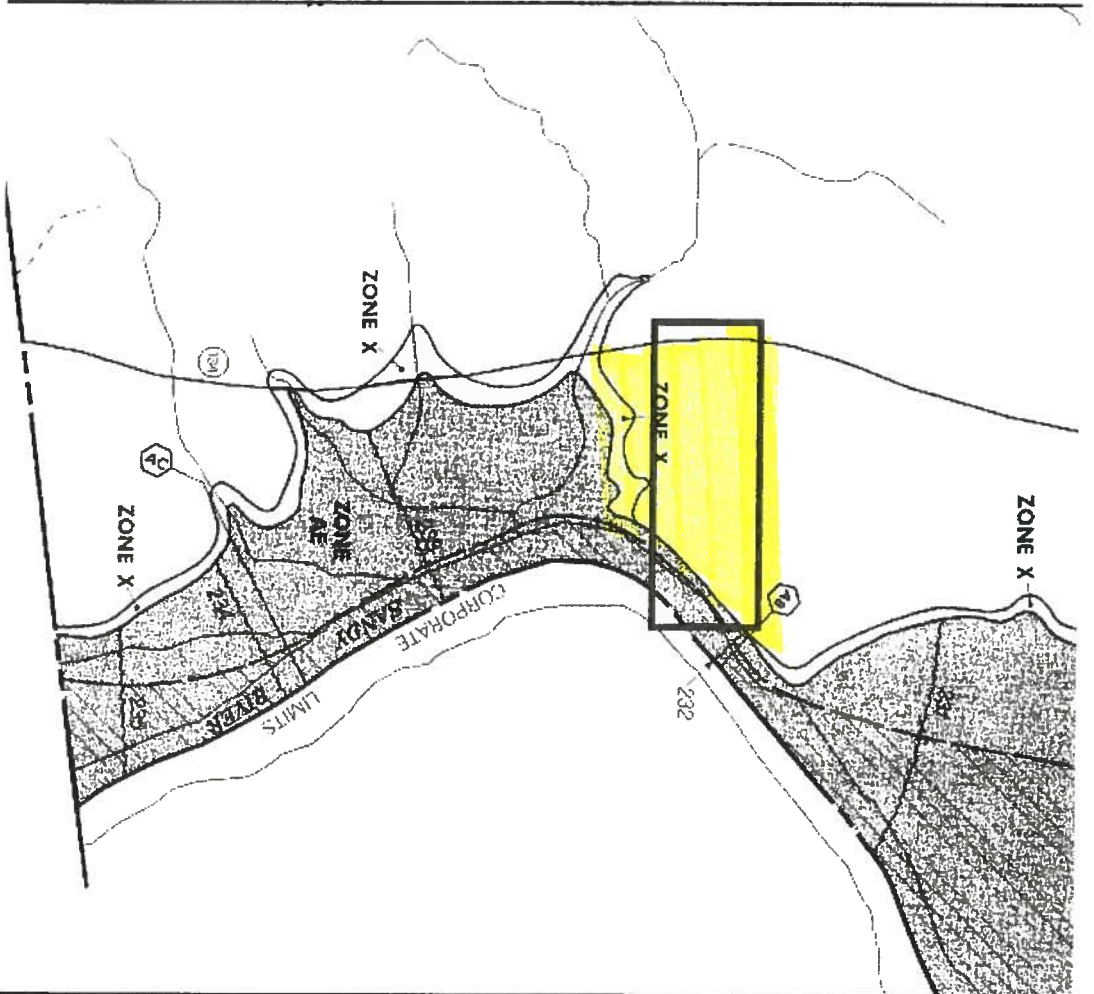
- Legend**
- Limited Commercial
 - Limited Residential
 - Resource Protection
 - Stream Protection

Data Sources:
 Kennebec State & Water, AEC&E, AEC&E, State Planning Board
 Geographic Coordinate System:
 NAD 1983 UTM Zone 18N
 Map Author: Matus
 Map Created/Edited by: J. Frothingham
 Kennebec State & Water Commission



our property

(5)



To determine if flood insurance is available in this Community, contact the insurance agent or call the National Flood Insurance Program at 1-800-658-6624.



APPROXIMATE SCALE



NATIONAL FLOOD INSURANCE PROGRAM

FIRM
FLOOD INSURANCE RATE MAP

TOWN OF
STARKS,
MAINE
SHERBURN VALLEY

PANEL 14 OF 16

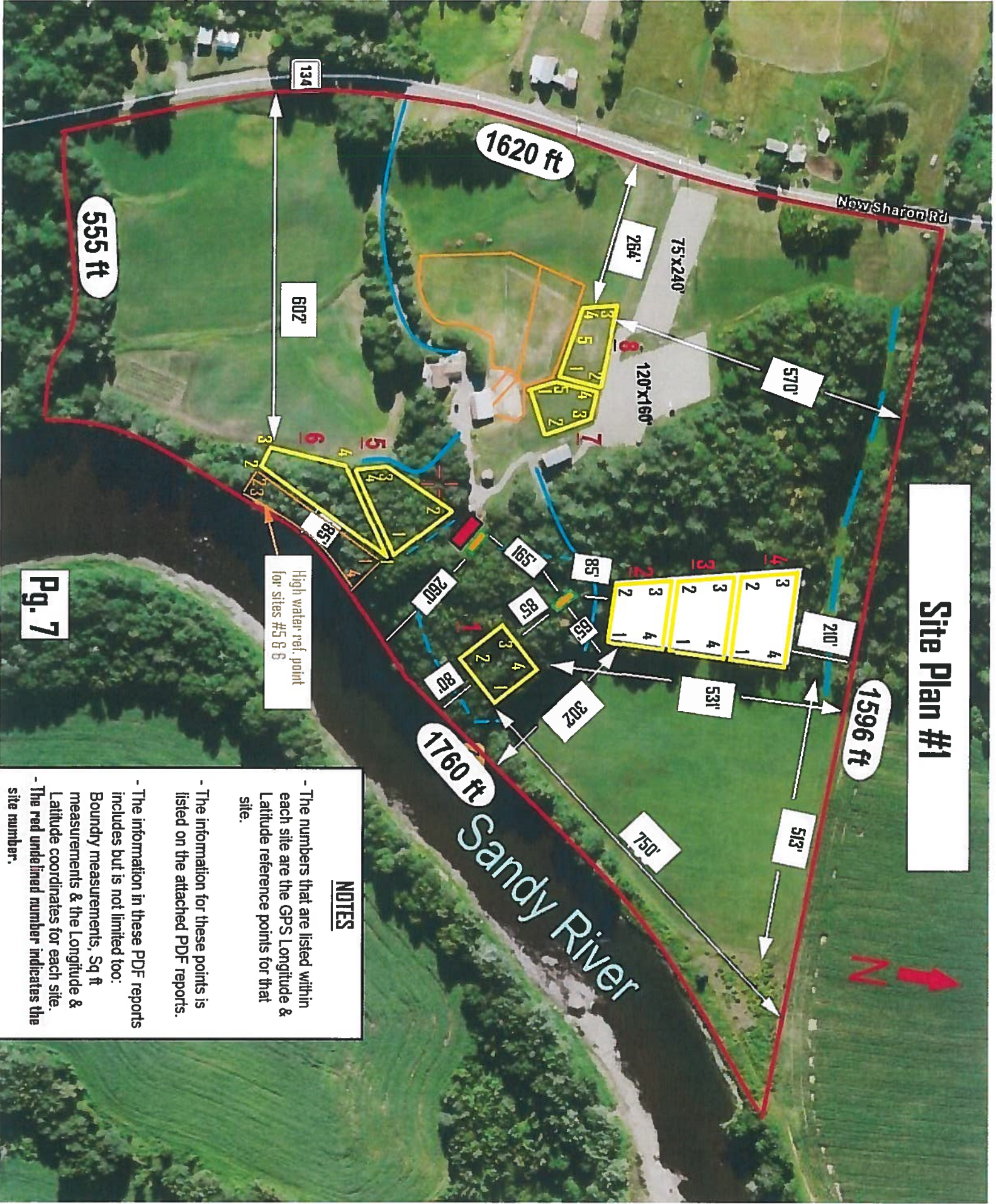


Federal Emergency Management Agency

COMMUNITY - PANEL NUMBER
23037Z DHA C
MAP REVISED
APRIL 20, 2000

This is an official FEMA/FIRM showing a portion of the above referenced flood zone prepared from the best available data. This map does not reflect changes or encroachments which may have been made subsequent to the date on this title block. For additional information, please refer to the title block or contact the office of the Flood Insurance Administrator, Starks, Maine.

4



Site Plan #1

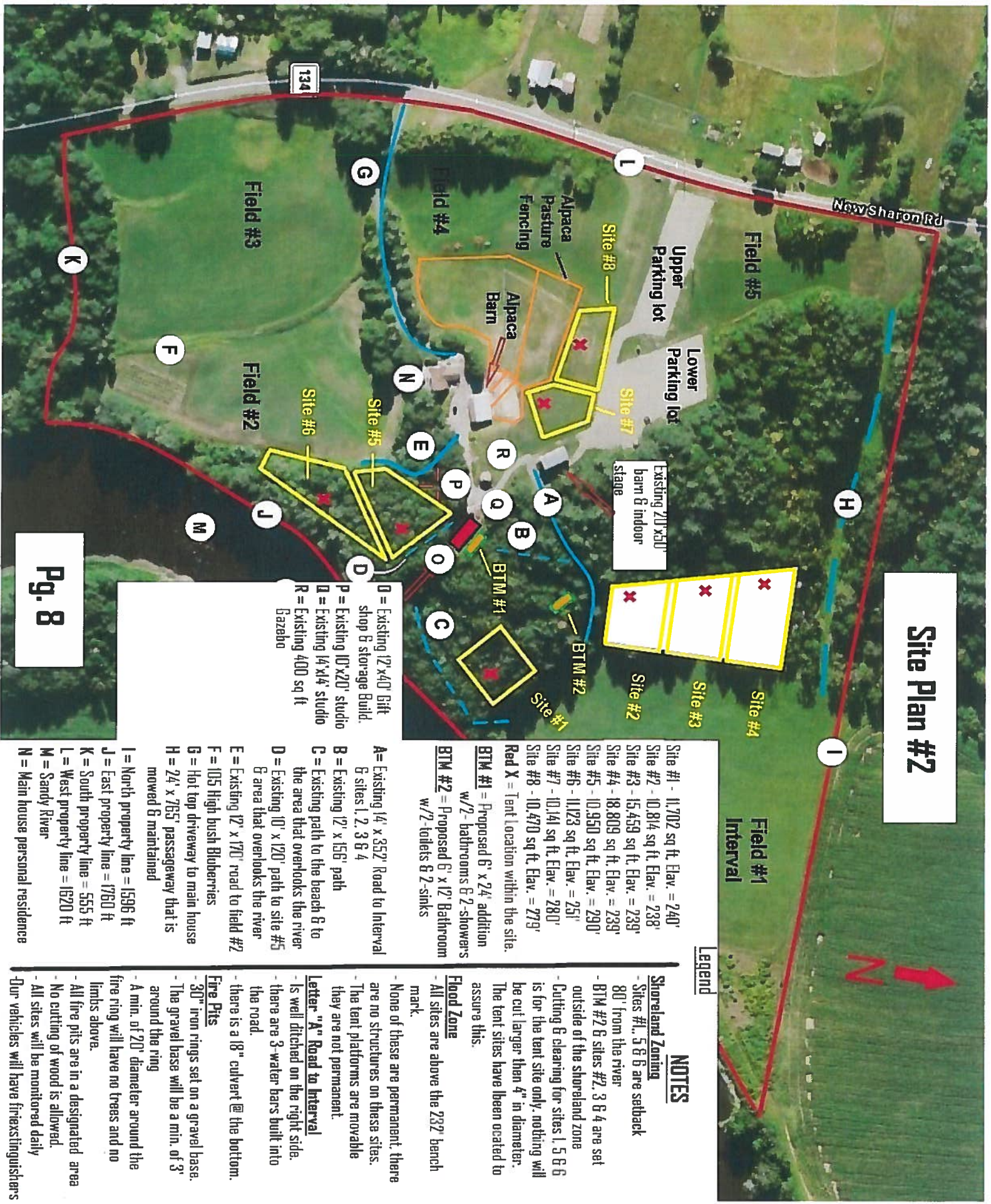


Pg. 7

NOTES

- The numbers that are listed within each site are the GPS Longitude & Latitude reference points for that site.
- The information for these points is listed on the attached PDF reports.
- The information in these PDF reports includes but is not limited to: Boundry measurements, Sq ft measurements & the Longitude & Latitude coordinates for each site.
- The red underlined number indicates the site number.

Site Plan #2



Field #1 Interval

Legend

NOTES

Shoreland Zoning

- Sites #1, 5 & 6 are setback 80' from the river
- BTM #2 & sites #2, 3 & 4 are set outside of the shoreland zone
- Cutting & clearing for sites 1, 5 & 6 is for the tent site only, nothing will be cut larger than 4" in diameter. The tent sites have been created to assure this.

Flood Zone

- All sites are above the 200' bench mark.

- None of these are permanent, there are no structures on these sites.
- The tent platforms are movable they are not permanent.

Letter "A" Road to Interval

- Is well ditched on the right side.
- there are 3 water bars built into the road.
- there is a 18" culvert @ the bottom.

Fire Pits

- 30" iron rings set on a gravel base.
- The gravel base will be a min. of 3' around the ring
- A min. of 20" diameter around the fire ring will have no trees and no limbs above.

- All fire pits are in a designated area
- No cutting of wood is allowed.
- All sites will be monitored daily
- Our vehicles will have fire extinguishers

- Site #1 - 11,702 sq ft. Elev. = 240'
- Site #2 - 10,814 sq ft. Elev. = 238'
- Site #3 - 15,459 sq ft. Elev. = 239'
- Site #4 - 18,809 sq ft. Elev. = 239'
- Site #5 - 10,950 sq ft. Elev. = 290'
- Site #6 - 11,123 sq ft. Elev. = 251'
- Site #7 - 10,141 sq ft. Elev. = 280'
- Site #8 - 10,470 sq ft. Elev. = 279'
- Red X = Tent location within the site.
- BTM #1 = Proposed 6' x 24' addition w/2- bathrooms & 2- showers
- BTM #2 = Proposed 6' x 12' Bathroom w/2- toilets & 2- sinks
- A = Existing 14' x 352'. Road to Interval & sites 1, 2, 3 & 4
- B = Existing 12' x 156' path
- C = Existing path to the beach & to the area that overlooks the river
- D = Existing 10' x 120' path to site #5 & area that overlooks the river
- E = Existing 12' x 170' road to field #2
- F = 105 High bush Blubberies
- G = Hot top driveway to main house
- H = 24' x 765' passageway that is mowed & maintained
- I = North property line = 1596 ft
- J = East property line = 1760 ft
- K = South property line = 555 ft
- L = West property line = 1620 ft
- M = Sandy River
- N = Main house personal residence
- O = Existing 12' x 40' Gift shop & storage Build.
- P = Existing 10' x 20' studio
- Q = Existing 14' x 14' studio
- R = Existing 400 sq ft Bazebo

Points

Point	latitude	longitudes
1	44.688081	-69.961788
2	44.688276	-69.962077
3	44.688104	-69.962364
4	44.687848	-69.962089

SITE # 1

Side Length

Side	Length (Meter)	Length (Feet)	Angle from North
1,2	31.5	103.34	-46.5
2,3	29.67	97.36	-130.13
3,4	35.82	117.52	142.63
5,1	35.18	115.42	42.57

Area

Square Meter	1087.18
Square Kilometer	0.0011
Square mile	0.0004
Square yard	1300.2564
Square foot	11702.2968
Hectare	0.1087
Arce	0.2686

Perimeter

Perimeter (m)	132.17
Perimeter (Km)	0.13

Diagonal Dimensions

Side	Length (Meter)	Length (Feet)
1,3	45.61	149.64

Thanks to Parveen for providing all calculations.

Creative Solutions

Architects and Interior Designers

Ar.parveen@hotmail.com

SITE # 1 / RIVERS EDGE

Point	latitude	longitudes
1	44.6885949661177	-69.9622782692313
2	44.6886636140547	-69.9627090990543
3	44.6888821904508	-69.9627828598022
4	44.6888640750993	-69.9622672051191

SITE #2

Side	Length (Meter)	Length (Feet)	Angle from North
1,2	34.9	114.52	-77.37
2,3	24.99	82.01	-13.49
3,4	40.81	133.91	92.83
5,1	29.94	98.22	-178.33

Area	
Square Meter	1004.66
Square Kilometer	0.001
Square mile	0.0004
Square yard	1201.5633
Square foot	10814.0598
Hectare	0.1005
Arce	0.2483

Perimeter	
Perimeter (m)	130.65
Perimeter (Km)	0.13

Diagonal Dimensions		
Side	Length (Meter)	Length (Feet)
1,3	51.1	167.66

Thanks to Parveen for providing all calculations.

Creative Solutions

Architects and Interior Designers

Ar.parveen@hotmail.com

Point	latitude	longitudes
1	44.688864	-69.962267
2	44.6888695573773	-69.9627721309662
3	44.6891627393164	-69.9628740549088
4	44.6891441473351	-69.9622387066483

SITE #3

Side	Length (Meter)	Length (Feet)	Angle from North
1,2	39.94	131.03	-89.11
2,3	33.58	110.18	-13.88
3,4	50.27	164.93	92.36
5,1	31.23	102.47	-175.89

Area	
Square Meter	1436.22
Square Kilometer	0.0014
Square mile	0.0006
Square yard	1717.7048
Square foot	15459.3285
Hectare	0.1436
Arce	0.3549

Perimeter	
Perimeter (m)	155.02
Perimeter (Km)	0.16

Diagonal Dimensions		
Side	Length (Meter)	Length (Feet)
1,3	58.36	191.49

Thanks to Parveen for providing all calculations.

Creative Solutions

Architects and Interior Designers

Ar.parveen@hotmail.com

Points

Point	latitude	longitudes
1	44.689144	-69.962238
2	44.6891512980979	-69.9628422036767
3	44.6894721280787	-69.9628287926316
4	44.689405	-69.96209

SITE #4

Side Length

Side	Length (Meter)	Length (Feet)	Angle from North
1,2	47.77	156.73	-89.03
2,3	35.69	117.1	1.7
3,4	58.88	193.18	97.28
5,1	31.29	102.67	-158.04

Area

Square Meter	1747.46
Square Kilometer	0.0017
Square mile	0.0007
Square yard	2089.9447
Square foot	18809.4847
Hectare	0.1747
Arce	0.4318

Perimeter

Perimeter (m)	173.63
Perimeter (Km)	0.17

Diagonal Dimensions

Side	Length (Meter)	Length (Feet)
1,3	59.27	194.45

Thanks to Parveen for providing all calculations.

Creative Solutions

Architects and Interior Designers

Ar.parveen@hotmail.com

Points

Point	latitude	longitudes
1	44.6874722747703	-69.9630028009415
2	44.687768	-69.963196
3	44.687486	-69.96352
4	44.6873306853991	-69.963543266058

SITE # 5**Side Length**

Side	Length (Meter)	Length (Feet)	Angle from North
1,2	36.26	118.96	-24.91
2,3	40.49	132.84	-140.76
3,4	17.37	56.98	-173.92
5,1	45.53	149.4	69.77

Area

Square Meter	1017.33
Square Kilometer	0.001
Square mile	0.0004
Square yard	1216.7165
Square foot	10950.4384
Hectare	0.1017
Arce	0.2514

Perimeter

Perimeter (m)	139.65
Perimeter (Km)	0.14

Diagonal Dimensions

Side	Length (Meter)	Length (Feet)
1,3	40.92	134.24

Thanks to Parveen for providing all calculations.

Creative Solutions

Architects and Interior Designers

Ar.parveen@hotmail.com

Points

Point	latitude	longitudes
1	44.687472	-69.963002
2	44.6870332035726	-69.9634044617415
3	44.687094	-69.963616
4	44.68733	-69.963543

SITE#6

Side Length

Side	Length (Meter)	Length (Feet)	Angle from North
1,2	58.25	191.11	-146.89
2,3	18.04	59.18	-67.99
3,4	26.87	88.16	12.4
5,1	45.59	149.58	69.74

Area

Square Meter	1033.44
Square Kilometer	0.001
Square mile	0.0004
Square yard	1235.9839
Square foot	11123.8448
Hectare	0.1033
Arce	0.2554

Perimeter

Perimeter (m)	148.75
Perimeter (Km)	0.15

Diagonal Dimensions

Side	Length (Meter)	Length (Feet)
1,3	64.21	210.67

Thanks to Parveen for providing all calculations.

Creative Solutions

Architects and Interior Designers

Ar.parveen@hotmail.com

Points

Point	latitude	longitudes
1	44.6881597172355	-69.9640243873
2	44.6882467196011	-69.9636679887772
3	44.6884891337222	-69.9638195335865
4	44.6885208357889	-69.9640522152185
5	44.6883055951004	-69.9641219526529

SITE #7

Side Length

Side	Length (Meter)	Length (Feet)	Angle from North
1,2	29.79	97.74	71.05
2,3	29.5	96.78	-23.96
3,4	18.73	61.45	-79.15
4,5	24.56	80.58	-167.03
6,1	17.96	58.93	154.57

Area

Square Meter	942.22
Square Kilometer	0.0009
Square mile	0.0004
Square yard	1126.8857
Square foot	10141.9619
Hectare	0.0942
Arce	0.2328

Perimeter

Perimeter (m)	120.54
Perimeter (Km)	0.12

Diagonal Dimensions

Side	Length (Meter)	Length (Feet)
1,3	40.05	131.4
1,4	40.21	131.94

Thanks to Parveen for providing all calculations.

[Creative Solutions](#)

Architects and Interior Designers

Ar.parveen@hotmail.com

Points

Point	latitude	longitudes
1	44.6883182282969	-69.9641487747431
2	44.6885584968681	-69.964063949883
3	44.6886204707427	-69.964679852128
4	44.6885003367102	-69.9646912515163
5	44.6884002248261	-69.9643948674202

SITE #8

Side Length

Side	Length (Meter)	Length (Feet)	Angle from North
1,2	27.55	90.38	14.09
2,3	49.17	161.34	-81.94
3,4	13.39	43.93	-176.14
4,5	25.94	85.11	115.41
6,1	21.48	70.49	115.11

Area

Square Meter	972.71
Square Kilometer	0.001
Square mile	0.0004
Square yard	1163.3514
Square foot	10470.1532
Hectare	0.0973
Arce	0.2404

Perimeter

Perimeter (m)	137.53
Perimeter (Km)	0.14

Diagonal Dimensions

Side	Length (Meter)	Length (Feet)
1,3	53.78	176.45
1,4	47.42	155.6

Thanks to Parveen for providing all calculations.

[Creative Solutions](#)

Architects and Interior Designers

Ar.parveen@hotmail.com

Points

Point	latitude	longitudes
1	44.690239157189	-69.9651981890202
2	44.6894206428522	-69.9587920680642
3	44.6867588419761	-69.9632569402456
4	44.6857858132223	-69.9638084694743
5	44.685965307507	-69.9643506109715
6	44.6858904586963	-69.965953566134
7	44.6869166417672	-69.9662103876472
8	44.6875242384594	-69.9662023410201

*OUTLINE of whole
PROPERTY -
PERIMETER*

Side Length

Side	Length (Meter)	Length (Feet)	Angle from North
1,2	514.53	1688.16	100.19
2,3	460.64	1511.35	-129.98
3,4	116.65	382.73	-158.05
4,5	47.28	155.12	-65.03
5,6	127	416.68	-93.76
6,7	115.9	380.26	-10.09
7,8	67.56	221.68	0.54
9,1	312.15	1024.16	14.73

Area

Square Meter	158907.58
Square Kilometer	0.1589
Square mile	0.0614
Square yard	190051.8766
Square foot	1710465.3004
Hectare	15.8908
Arce	39.2669

Perimeter

Perimeter (m)	1761.7
Perimeter (Km)	1.76

Diagonal Dimensions

Side	Length (Meter)	Length (Feet)
1,3	416.31	1365.91
1,4	507.23	1664.22
1,5	479.93	1574.65
1,6	487.23	1598.59
1,7	378.01	1240.26

Thanks to Parveen for providing all calculations.

Creative Solutions

Architects and Interior Designers

Ar.parveen@hotmail.com

Points

Point	latitude	longitudes
1	44.687472	-69.963002
2	44.6870332035726	-69.9634044617415
3	44.686968	-69.963088
4	44.687284	-69.962679

*High Water Mark
Ref. for LOTS 5+6*

Side Length

Side	Length (Meter)	Length (Feet)	Angle from North
1,2	58.25	191.11	-146.89
2,3	26.05	85.46	106.16
3,4	47.75	156.67	42.62
5,1	33	108.27	-50.69

Area

Square Meter	1515.64
Square Kilometer	0.0015
Square mile	0.0006
Square yard	1812.6903
Square foot	16314.1974
Hectare	0.1516
Arce	0.3745

Perimeter

Perimeter (m)	165.05
Perimeter (Km)	0.17

Diagonal Dimensions

Side	Length (Meter)	Length (Feet)
1,3	56.45	185.22

Thanks to Parveen for providing all calculations.

Creative Solutions

Architects and Interior Designers

Ar.parveen@hotmail.com

Existing Signage at The Property

